



ARCHER





AGGAA CONFERENCE

▸ Archer Overview

WHO WE ARE

- Archer is manufacturing a safe, sustainable, low noise, all electric vertical takeoff and landing aircraft with the goal of being first to market in 2025



Urban Congestion Is Not Sustainable

- In 2018, 55% of the world's population lived in urban areas according to the United Nations, a proportion that they project to increase to 68% by 2050
- Traffic congestion cost the US economy nearly \$87 billion in 2018
- Vast majority of trips in urban areas are less than 50 miles long, but take more than an hour
- Major cities across the world have a similar dynamic, especially trips from airport to city center



Archer Midnight

ELECTRIC VERTICAL TAKE-OFF & LANDING AIRCRAFT

PERFORMANCE

- Range:** Up to 100 miles, optimized for 20-50 mile rapid back-to-back trips with minimal charge time
- Speed:** Up to 150 MPH
- Payload:** Industry leading 1,000 lbs, pilot + 4 passengers

ADVANTAGES

- Safety:** Will be certified at levels similar to today's commercial airliners (no single points of failure)
- Noise:** 100x quieter than a helicopter
- Cost:** Approximately $\frac{1}{3}$ of cost to manufacture and operate than a traditional helicopter



▸ Company Snapshot

COMPANY

- Raised ~\$1 billion of capital
- Went public in 2021 on NYSE
- Key investors: United Airlines, Stellantis, Marc Lore (founder of Jet.com), Moelis
- ~600 person workforce

KEY HIGHLIGHTS

- Industry leading team
- Key strategic partners include United Airlines & Stellantis
- Targeting commencement of operations in 2025



Timeline to Commercialization & Operations at Scale

2021 – 2024

VEHICLE CERTIFICATION

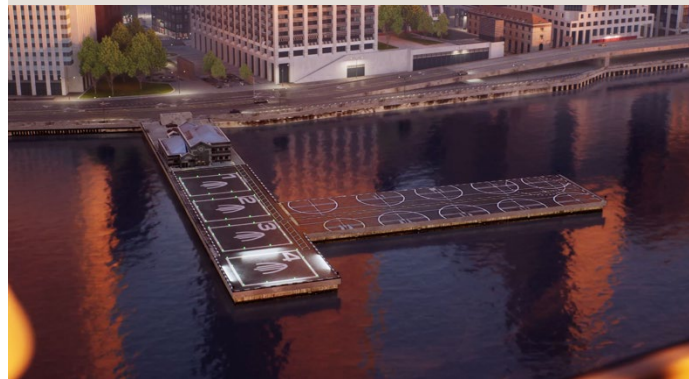
- Ensure Midnight is optimized for business case
- Receive Type Certification from FAA for Midnight



2025 – 2028

COMMERCIALIZATION & EARLY OPERATIONS

- Build out UAM operations focused on “trunk” and “branch” approach
- Focus on use of existing real estate (helipads, airport FBO’s, retrofits)



2028+

OPERATIONS AT SCALE

- High volume manufacturing
- Continued engineering innovation within engines, battery, and acoustics



▸ Strategic Partners

UNITED AIRLINES

- United is a major strategic partner: investor, operating partner, and flagship customer
- Up to \$1.5B in aircraft purchases (\$10M received in cash deposit on first 100 aircraft)
- Go-to-market operating partner: announced the industry's first point-to-point eVTOL route from Manhattan to Newark Liberty International Airport in Nov. '22, and subsequently announced downtown Chicago to O'Hare in Mar. '23
- Oscar Munoz (ex-United CEO and chairman) member of Archer's board of directors



STELLANTIS

- Partner since 2020, Stellantis is the 3rd largest auto OEM by revenue
- Stellantis is a major equity investor in Archer, recently provided an option of up to \$150M in equity investment
- Stellantis is partnering with Archer on scalability to support high volume manufacturing with a goal to serve as our contract manufacturing partner in the future



BUSINESS MODEL

▸ Two Unique Revenue Streams

ARCHER AIR - AERIAL RIDE SHARING



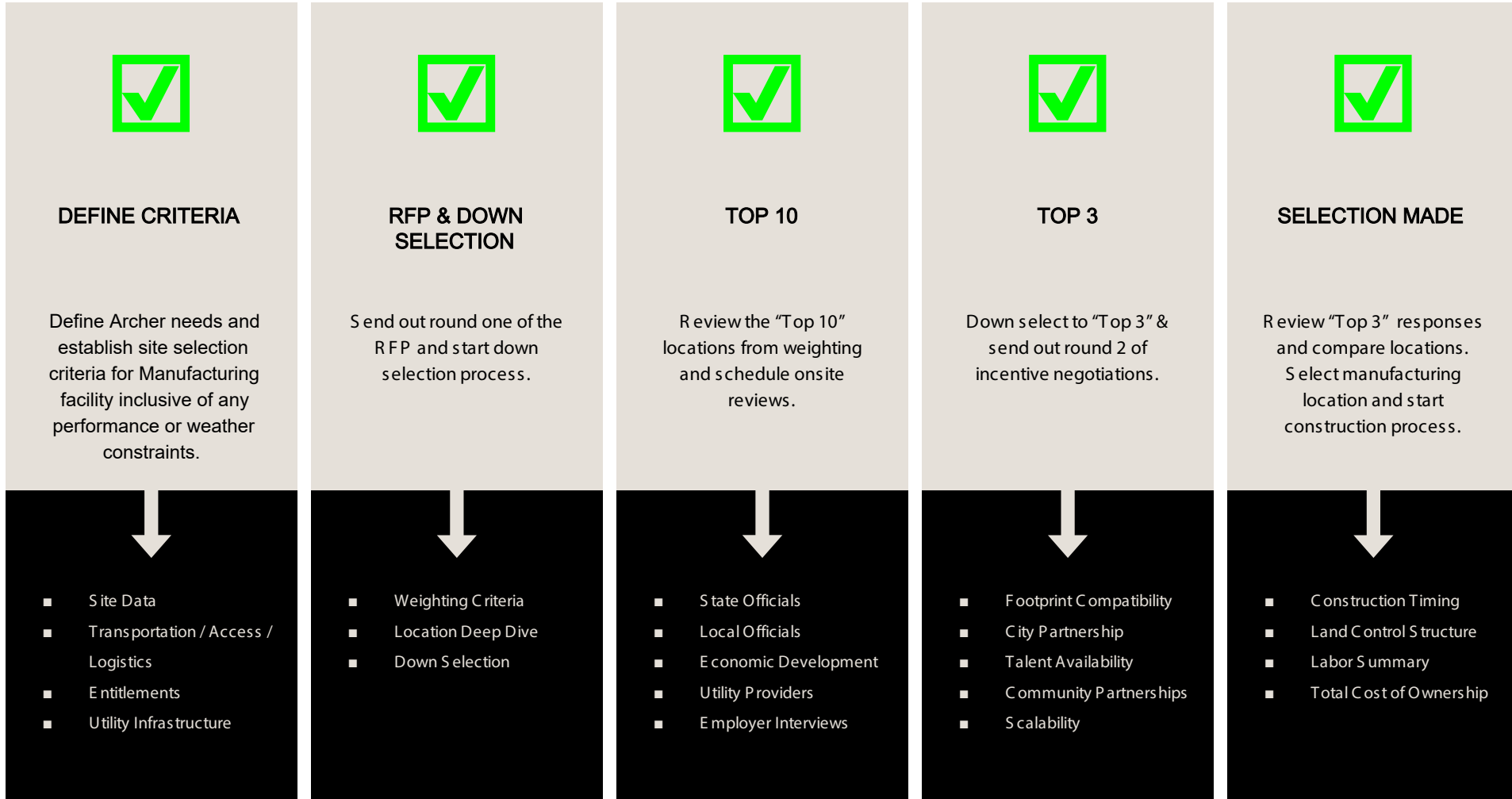
ARCHER DIRECT - AIRCRAFT OEM



AGGAA CONFERENCE

▸ Site Selection Process

Site Selection Process



AGGAA CONFERENCE

▸ Project Overview

▸ Manufacturing Facility Strategy

2023

- Archer will use our facility in CA to leverage our proximity to HQ, design engineering, and labs for initial aircraft builds.
- This aircraft will be our flight test vehicles that will be used for certification credit.
- LRIP will consist of six flight test aircraft, a fatigue article, and stress article

2024

- Archer needs scalable manufacturing capabilities in place to support our planned commercialization in 2024/2025.
- Archer announced Covington, Georgia as our manufacturing home with construction underway.



▸ Covington, Georgia

- Covington will be our manufacturing home for highvolume manufacturing.
- Construction began in March 2023, with the goal of Archer taking occupancy in March 2024
- Low rate initial production is planned to begin mid 2024.
- This initial “Phase 1” facility will allow us to produce up to 650 aircraft per year.
- Archer will have the option to expand the facility in a “Phase 2” buildout with the ability to add 475,000 square feet.
- Upon completion of “Phase 2” the facility would enable us to produce over 2,000 aircraft per year.

- Facility is located at the Covington Municipal Airport with direct runway access from our facility
- The 96 acres are located at 249 Williams Rd, Covington GA



▸ Covington Project Status

- Wetland Permit ✓
- Grading & Site Plan ✓
- Land Disturbance Permit ✓
- Utility Selection ✓
- Break Ground ✓
- Clearing & Grading **In Progress**
- Certificate of Occupancy **Targeting Mid '24**
- Production Load **Targeting Mid '24**



▸ Archer Project

- Archer will create over 1,000 jobs
 - Invest over \$118MM in the project
 - Community partnerships to include skill development and entry level training programs
-
- Factory
 - Two building campus totalling 385k sq. ft, capable of producing 650 aircraft annually
 - Expansion capability totalling 850k sq. ft, capable of producing over 2,000 aircraft annually





▸ Thank You

